

# Nu-Edge<sup>®</sup>

Nickel-free Brackets

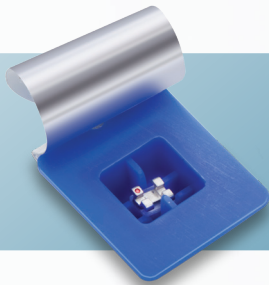
Innovation and precision  
in orthodontics



# Setting the standard for metal brackets.

Stronger cobalt chromium (CoCr) alloy material  
Lower friction  
Superior biocompatibility

Nu-Edge<sup>®</sup> **Twin Brackets**



Nu-Edge NX<sup>®</sup>  
**Pre-coated Brackets**

Nu-Edge<sup>®</sup> SL **Passive Self-ligating  
Brackets**



TP Orthodontics, Inc.



**Strong  
cobalt chromium  
alloy**



**Biocompatible for  
nickel-sensitive  
patients**



**Produces less friction  
than stainless steel**



**Exceptionally hard alloy  
that prevents archwire  
collapse**



**Available in standard  
size for added control  
or mini size for  
aesthetics**



**Vertical slots available\*  
for treatment  
versatility**



**Lower bicuspid brackets  
available gingivally  
offset to reduce occlusal  
interference**



**Nu-Edge Brackets pair  
seamlessly with ClearVu®  
and InVu® Aesthetic  
Brackets**

\*Vertical slot available in Roth prescription.



TP Orthodontics, Inc.

### **Nu-Edge Cobalt Chromium Brackets** from

TP Orthodontics are the first  
orthodontic devices made  
from this material, known for  
its **hardness, durability**, and  
excellent **biocompatibility**.

Not only do they prevent  
archwire slot collapse due  
to occlusal tension, but they  
also generate **lower friction  
levels** than stainless steel  
brackets with a similar design,  
so treatment is **efficient** and  
can progress **as planned**.

# Nu-Edge®

Cobalt Chromium

## Twin Brackets

**Nu-Edge** Twin Brackets feature a tried-and-true design that is sure to become the workhorse of your practice.

Like all Nu-Edge Brackets, our twin brackets are made from our **most durable alloy**, offering **superior strength** and **precision**.



Available with a **vertical slot** and **hooks** so a wide array of auxiliaries can be used for various orthodontic needs.

The **mini size option** and **smooth surface** ensures patient comfort. **Biocompatible** for nickel-sensitive patients.

T P O R T H O . C O M

# Nu-Edge NX®

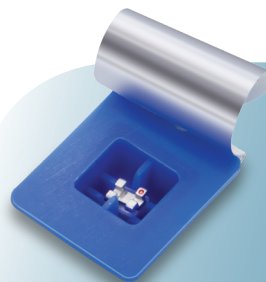
Cobalt Chromium

## Pre-coated Brackets

Achieve a greater level of efficiency with **Nu-Edge NX** Pre-coated Brackets. **Nu-Edge NX** Brackets feature **Readi-Base®** with **eXact®** **pre-applied adhesive** for convenient placement right out of the package.

**Bonding is streamlined and the risk of contamination is reduced**, while leaving minimal flash to clean up.

Pair the convenience of pre-coated brackets with the strength and biocompatibility of Nu-Edge brackets for optimal performance.



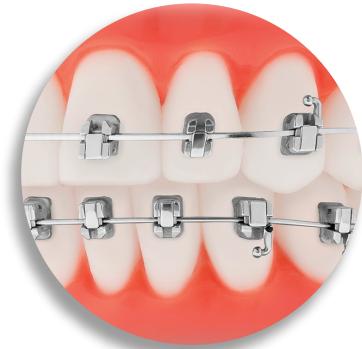
Pre-coated and **ready to place** right out of the package.



# Nu-Edge<sup>®</sup> SL

Cobalt Chromium

## Passive Self-ligating Brackets



We bring the efficiency of passive self-ligation and the strength and biocompatibility of cobalt chromium together in a **robust, easy-to-use bracket system**.

The **Nu-Edge SL** gate slides in place, locks and holds the archwire securely, yet opens with a standard explorer – no special tools needed.

Rounded rectangular archwire from TPO is recommended for improved finishing efficiency.



### Ligation Options

Hidden tie wings allow for traditional elastomeric or metal ligatures when needed.



### Robust Locking Mechanism

Once the slide is locked in place, the archwire slot becomes a rigid tunnel – preventing the wire from being unseated. The slide is easily opened with an explorer, and closed with finger pressure.

## Positioning Guides

Positioning guides are optional and available for clinic staff to easily reference the long axis for efficient bracket bonding.



**Orthodontists around  
the world trust TPO®  
to provide efficient  
and predictable  
treatment options.**



TP Orthodontics, Inc.

100 Center Plaza  
La Porte, Indiana 46350-9672  
United States  
800.348.8856  
info@tportho.com



T P O R T H O . C O M

©2024 TP Orthodontics, Inc. All rights reserved.  
Nu-Edge, Nu-Edge NX, TPO, ClearVu, InVu, Read-Base, and eXact are registered  
trademarks of TP Orthodontics, Inc. Patents may apply.

996-291, Rev. A / 2.24