



TP Orthodontics, Inc.

tportho.com

cosmeticbraces.com

OFFICE AND LABORATORY SUPPLIES

OFFICE AND LABORATORY SUPPLIES

Impression Trays

- Impression Trays
 - Extend-O®
 - Norm-O®
 - Solay®
- Dispatula
- Utility Wax Strips

Base Formers

- Flexible Plastic Model Base Former
- Rigid Plastic Model Base Former

Lab Supplies

- Model Finishing Soap
- Model Storage Boxes
- Bracket Inventory Boxes
- TP Original Lab Wire

Lab Tools

- Wax Spatula
- Cement Spatulas
- Bluegrass Roller

TPO® Demonstration Typodonts

Extend-O® Orthodontic Impression Trays

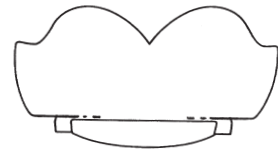
- Tray bodies can be easily adapted to fit unique arch forms of each patient.
- Positive post-damming ridge.
- Easily adjustable soft aluminum.
- Circular, concave cast aluminum handle allows firm grip.



TEFLON-COATED

Upper Sizes	Order No.	Lower Sizes	Order No.
1	125-011	1	125-001
2	125-012	2	125-002
3	125-013	3	125-003
4	125-014	4	125-004
5	125-015	5	125-005
6	125-016	6	125-006
7	125-017	7	125-007
8	125-018	8	125-008
Large Kit		125-100	
Mini-Kit		125-800	

Large kit includes upper and lower sizes 2 through 8.
Mini-kit includes upper and lower sizes 3, 4, 5 and 6.
Individual sizes: Package of 1



Extend-O Flange Height

Norm-O® Impression Trays

- Incorporate all the design features of Extend-O trays, except flange height is reduced.
- For patients with small mouths or low gingival sulcii, as with cleft lip patients.



TEFLON-COATED

Upper Sizes	Perforated	Lower Sizes	Perforated
1	125-011	1	125-001
2	179-012	2	179-002
3	179-013	3	179-003
4	179-014	4	179-004
5	179-015	5	179-005
6	179-016	6	179-006
7	179-017	7	179-007
8	179-018	8	179-008
Large Kit		179-100	
Mini-Kit		179-800	

Large kit includes upper and lower sizes 2 through 8.
Mini-kit includes upper and lower sizes 3, 4, 5 and 6.
Individual sizes: Package of 1



Norm-O Flange Height

Solay® Disposable Impression Trays

- Inner etched tray surface for alginate retention.
- No retention sprays necessary.
- No retention slits or perforations to cause impression material leakage.
- Two small round holes allow a minor amount of alginate through to monitor setting time.
- Extended flanges for deeper impressions.
- Rounded tray borders eliminate the need for protective wax strips.
- Can be used more than once; store trays with patient records for progress models and retainer impressions.
- Size molded onto tray handle. Each size is a different color.

Size	Upper/Lower	Color	Order No.
1	Upper	Yellow	177-105
1	Lower	Yellow	177-106
2	Upper	Pink	177-107
2	Lower	Pink	177-108
3	Upper	Purple	177-109
3	Lower	Purple	177-110
4	Upper	Green	177-111
4	Lower	Green	177-112
Assorted Starter Kit*			177-100

*Kit Includes: One pair size 1, three pair size 2, four pair of size 3, two pair size 4
Individual sizes: Package of 20



Dispatula

Preserves life of trays when cleaning.

100-311 Dispatula
Package of 25



Utility Wax Strips

- 28cm (11") long x 5mm (0.1875") thick white wax strips.
- Build up impression trays, preserving the periphery roll, extending trays or postdamming.
- Approximately 64 strips in each box.

100-604 Wax Strips



Base Formers

Flexible Plastic Model Base Former

- Fabricated from flexible, blue plastic.
- Provide sufficient plaster base for trimming.
- Smooth and flexible for easy separating and cleaning.
- Translucent material allows recognition of air bubbles and confirmation of correct positioning.
- Side extensions aid in removal.

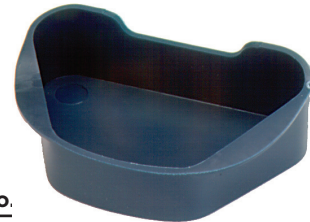


	Width*		Depth*		Length*		Order No.
Small	10.2cm	(4")	3.2cm	(1.25")	6.7cm	(2.625")	100-807
Medium	10.2cm	(4")	3.8cm	(1.5")	6.7cm	(2.625")	100-808
Large	11.4cm	(4.5")	3.2cm	(1.25")	7.6cm	(3")	100-809
X-Large	11.4cm	(4.5")	3.8cm	(1.5")	7.6cm	(3")	100-810

*Inside Dimensions

Rigid Plastic Model Base Former

- Fabricated from sturdy blue plastic.
- Rigid walls hold shape when vibrating or carrying.
- Upper and lower shapes are identical.
- Unique "ears" aid separation and add stability to sides.



	Width*		Depth*		Length*		Order No.
Small	10.2cm	(4")	3.2cm	(1.25")	6.7cm	(2.625")	100-805
Medium	10.2cm	(4")	3.8cm	(1.5")	6.7cm	(2.625")	100-804
Large	11.4cm	(4.5")	3.2cm	(1.25")	7.6cm	(3")	100-803
X-Large	11.4cm	(4.5")	3.8cm	(1.5")	7.6cm	(3")	100-802

*Inside Dimensions

Model Finishing Soap

- Produces a high quality finish on plaster models.

100-880 Model Finishing Soap, 3.8L (1 gallon)

Model Storage Boxes

- Holds four sets of models securely.
- Unique diagonal divisions are placed for trimmed model bases.
- Sturdy, double-faced corrugated board approximately 2mm (0.09375") thick.
- Shipped in single flat pieces for convenient storage.
- Available with chalk white finish in two sizes.

100-400 Medium Model Storage Box

100-401 Large Model Storage Box
Package of 1



Medium

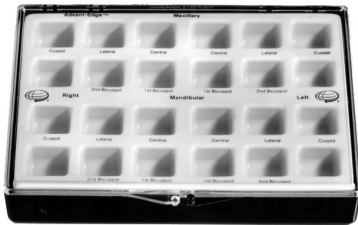
24.8 x 15.9 x 5cm
(9.75" x 6.25" x 2")
Shipping weight of 50
boxes is approximately
8kg (17 lbs).

Large

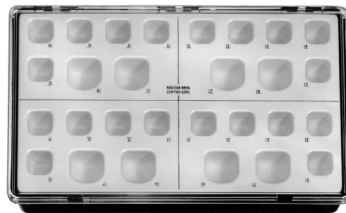
26.7 x 16.5 x 5cm
(10.5" x 6.5" x 2")
Shipping weight of 50
boxes is approximately
9kg (20 lbs).

Bracket Inventory Boxes

- Plastic storage boxes.
- Molded inserts measure 12.7 x 18.4cm (5" x 7.25").
- Brackets not included.



100-907 Bracket Inventory Box
24 compartments



100-913 Large Inventory Box
28 compartments



100-900 Small Inventory Box
18 compartments

TP Original Lab Wire

- Strong, with excellent memory qualities.
- Nick resistant and easy to form.
- Polished and packaged in 30.5cm (12") lengths.

0.71mm (.028")	0.81mm (.032")	0.91mm (.036")
706-028	706-032	706-036

Package of 25



Wax Spatula

- Wax Spatula No. 7. stainless steel.
- Overall length 15.8cm (6.25").

100-320 Wax Spatula



Cement Spatulas

- Thin, flexible, stainless steel blades.

100-342 Cement Spatula, 3.8cm (1.5") Blade

100-343 Cement Spatula, 5.1cm (2") Blade



Bluegrass Roller

- Rollers are available in packages of five to fabricate bluegrass appliances.
- Corrects thumb sucking problems.
- Remains in the mouth for about six months to ensure the habit has been broken.

Designed by Dr. Bruce Haskell and Dr. John Mink.

611-025 Bluegrass Roller
Package of 5



TPO® Demonstration Typodonts

- TPO bracket systems and products.
- For demonstration purposes.
- Acrylic models.

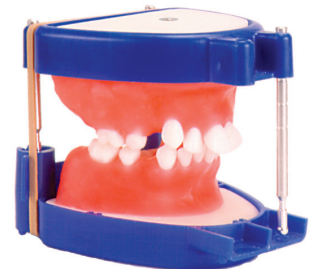
- 800-054** InVu® MBT (standard size)
800-055 Tip-Edge® PLUS Ceramic
800-056 1/2 InVu Mini & 1/2 Nu-Edge® Mini
800-057 Flip-Lock® HERBST® Cantilever
800-061 Nu-Edge MBT Mini
800-062 Tip-Edge PLUS Metal
800-063 1/2 Tip-Edge PLUS Ceramic and 1/2 Tip-Edge PLUS Metal
800-071 ClearVu® (shown)
800-072 VektorPRO Class II Appliance
800-073 Nu-Edge SL Roth / MBT



Wax Typodonts*

Excellent for orthodontic instruction at courses and seminars. When heated, teeth will move in response to forces applied by archwires, elastics and auxiliaries. Typodonts should remain in oven or water at 60°C (140°F) for 30 to 60 minutes for most effective tooth movement. Class II, Division 1 malocclusions are available on plastic articulators. Any TPO bracket system may be added to typodonts on request.

Bases are each threaded (0.25"-20 coarse thread) to enable individual use with bench mounted swivels.



*Design may vary.

- 800-510** Wax Typodont without Appliances

Notes

Notes

[illegible]