



TP Orthodontics, Inc.

tportho.com

cosmeticbraces.com

INTRAORAL

INTRAORAL

Crimpable Hooks and Stops

- Coated Crimpable Hook
 - Standard
 - Aesthetic
- Ribbed Crimpable Hook
 - Standard
 - Aesthetic
- Crimpable Stop
 - Standard
 - Aesthetic
- Solderable Stop

Bondable Traction Hooks

Separators

- Self-Locking Separating Springs
- “C” Separation Maintainers
- Super Slick® Stick
- Sep-A-Rings®
 - Super Slick
 - Original

Reflex® Coil Springs

- Double
- Open
 - Aesthetic
- Closed

Vertical Slot Auxiliaries

- Power Pin
- Power Hook
- Disposable Flexible Ruler

Rotating and Uprighting Springs

- Rotating
- Standard Uprighting
- Side-Winder Uprighting
 - Original
 - Invisible
- Auxiliaries Combo Box

Palatal Arch Bars

- Preformed with Distal Loop
- Reverse with Mesial Loop

Torquing Auxiliaries

- Torque Bar
- Individual Root Torque

Outrigger Appliance

Lip Bumpers

Coated Crimpable Hook

- Slide-proof crimpable hooks for rectangular wire to accept force loads equal to welded hooks.
- Inner surface features a tungsten carbide abrasive coating that produces a gripping force when hook is cinched tightly onto wire.
- For best results, use with wire sizes 0.41 x 0.41mm (.016" x .016") through 0.56 x 0.71mm (.022" x .028").

Crimpable hook pliers (100-172) or power crimping pliers (100-192) are recommended for application.

226-010	Crimpable Hook Package of 10 (bag)
226-020	Oriented Crimpable Hook Package of 20 (box)
226-010W	Crimpable Hook (aesthetic coating) Package of 10 (bag)
226-020W	Oriented Crimpable Hook (aesthetic coating) Package of 20 (box)



Oriented

Ribbed Crimpable Hook

- Ribbed crimpable hooks attach securely to rectangular and round archwires.
- Unique inner rib design produces acceptable force loads when hook is tightly cinched onto wire.
- For best results, use with rectangular wire sizes 0.41 x 0.41mm (.016" x .016") to 0.56 x 0.71mm (.022" x .028").
- Hooks also grip round wire sizes 0.41mm (.016") to 0.56mm (.022").

Crimpable hook pliers (100-172) or power crimping pliers (100-192) are recommended for application.

226-014	Ribbed Crimpable Hook Package of 10 (bag)
226-015	Oriented Ribbed Crimpable Hook Package of 20 (box)
226-014W	Ribbed Crimpable Hook (aesthetic coating) Package of 10 (bag)
226-015W	Oriented Ribbed Crimpable Hook (aesthetic coating) Package of 20 (box)



Oriented

Crimpable Stop

- Conserve arch length by preventing the archwire from sliding distally into tubes.
- Designed to be placed on round or rectangular archwires, sizes.
0.46mm (.018") round through 0.56 x 0.71mm (.022" x .028").
- Can be used in conjunction with open coil springs to gain or maintain space.



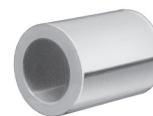
Crimpable hook pliers (100-172) or power crimping pliers (100-192) are recommended.

226-009 Crimpable Stop
Package of 10

226-009W Crimpable Stop (aesthetic coating)
Package of 10

Solderable Stop Facebows and Lip Bumpers

Heavy-duty stops for 1.14mm (.045") wire such as facebows and lip bumpers. Must be crimped and soldered onto wire.



226-008 Solderable Stops
Package of 10

Bondable Traction Hooks

- Encourage and direct the eruption of malpositioned or impacted teeth when a portion of the crown is surgically exposed.
- Eyelets are securely soldered to 3.56mm (.140") diameter laminated mesh bonding bases.

Round Traction Hook

- 34mm (1.338") chain.
- Formed from 0.31mm (.012") ligature wire.
- Stiff ligating chain used when tooth is deeply imbedded in gingival tissue.
- Chain can be cut to required length.



Round Traction Hook

Rumely Traction Hook

- 14K gold-filled chain.
- Diameter of the bonding base is 3.56mm (.140").
- Chain is 31.75mm (1.25") long and flexible.
- Chain links are large enough for easy engagement of elastic thread.

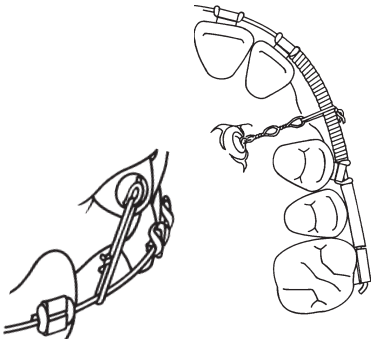


Round Traction Hook with Stiff Chain

- 224-011** Round Traction Hook
- 224-012** Round Traction Hook with Stiff Chain
- 224-014** Rumely Traction Hook with Flexible Chain
Package of 10



Rumely Traction Hook with Flexible Chain



Self-Locking Separating Springs

- Produces continuous mild pressure and attains sufficient separation for band placement in three to four days.
- Use for separating teeth to aid in eruption.
- Easily placed and removed with ordinary small beak pliers.

Wire Size	Short	Medium	Long	Extra Long
0.46mm (.018")	352-018C	351-018C	353-018C	354-018C
0.51mm (.020")	352-020C	351-020C	353-020C	354-020C
0.56mm (.022")	352-022C	351-022C	353-022C	354-022C

Package of 100



Short Length—used between bicuspid and cuspids.
(Length .300-.320)



Long Length—used between molars where the contact area is wide.
(Length .380-.400)



Medium Length—used between bicuspid, bicuspid and molars, or between molars if the contact area is small.
(Length .340-.360)



Extra Long Length—used between molars with broad interproximal contacts.
(Length .420-.440)

“C” Separation Maintainers

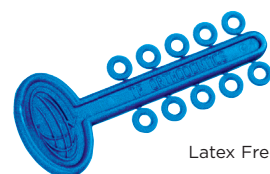
- Place around contact areas of posterior teeth to maintain space.
- Use during intervals between banding appointments to hold space.
- Fabricated from 0.81mm (.032") brass wire.



225-003 “C” Separation Maintainers
Package of 100

Super Slick® Stick Separators

- Designed for individual patient use.
- Oval end assures easy grasping.
- Dark blue color simplifies identification.
- Place with TPO Sep-A-Rings placing plier (100-135).

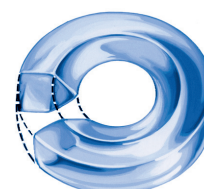


Latex Free

353-002 Super Slick Stick Separators
Package of 25 sticks (250 separators)

Sep-A-Rings® Separators

- Separate teeth prior to band placement.
- Precision molded from elastomeric material.
- Blue in color for identification.
- Wedge-shaped inner circumference.
- Separates teeth in two or three days.
- Two sizes – small for anterior and large for posterior teeth.
- Super Slick has slippery surface for easy seating.
- Place with TPO Sep-A-Rings placing pliers (100-135).



Latex Free
Not Radio Opaque

Super Slick®

352-001C 100 Small Super Slick
352-001D 500 Small Super Slick
353-001C 100 Large Super Slick
353-001D 500 Large Super Slick

Original

352-000C 100 Small Sep-A-Rings
353-000C 100 Large Sep-A-Rings

Reflex® Coil Springs

- Made from Reflex nickel titanium wire.
- Delivers light, continuous force for efficient tooth movement.
- Reactivation is not necessary.
- Springs will not deform when compressed or elongated, and return to their original shape as teeth move.

Double Coil Springs

- Packaged in 18cm (7") lengths.
- Cut to any length to provide optimum continuous maintenance or expansion force.

210-508	.30mm (.012") wire with 1.4mm (.055") coil
210-515	.25mm (.010") wire with .89mm (.035") coil Package of 3



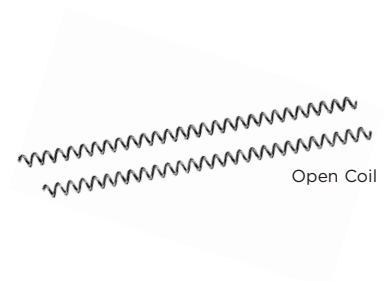
Double Coil

Open Coil Springs

- Packaged in 18 cm (7") lengths.
- Cut to any length and compressed to provide optimum continuous maintenance or expansion force.

210-500	Light force .25mm (.010") wire with .76mm (.030") I.D.
210-501	Medium force .30mm (.012") wire with .76mm (.030") I.D.
210-502	Heavy force .36mm (.014") wire with .91mm (.036") I.D. Package of 3

- Medium aesthetic Reflex open coil spring is also available with coating.
- Coating is the same as the aesthetic wires.
- The entire coil spring is coated.



Open Coil

210-501W	Aesthetic Reflex Coil Spring – Medium Package of 3
-----------------	---

Closed Coil Springs

- Delivers light, continuous force for canine retraction or anterior segmented retraction.
- Springs made with 0.76mm (.030") I.D. have eyelets on each end to simplify attachment.
- Inactivated spring length (excluding eyelets) is 3mm (.118").
- Total activation length is 15mm (.591") without any deformation or change in force.

If retraction span is longer than 15mm (.591"), ligate two springs together with a ligature wire. Never expand the spring (excluding eyelets) more than 15mm.



Closed Coil

210-510	Light 150g (5.3 oz.), 0.23mm (.009") wire
210-511	Medium 200g (7 oz.), 0.25mm (.010") wire
210-512	Heavy 250g (8.8 oz.), 0.28mm (.011") wire Package of 10

Vertical Slot Auxiliaries

Power Pin

- Versatile auxiliary to engage steel ligatures, elastics or any type of elastomers.
- Low profile gingival head portion with a 15° labial inclination.
- Low profile for patient comfort and improved aesthetics.
- Use on either the left or right.
- Insert or remove from the vertical bracket slot with archwire and ligatures in place.



Stainless Steel Pins	Standard	Long*
Oriented Box of 50	201-140	201-143
Non-Oriented Pack of 1,000	201-140M	

*Recommended for use with:

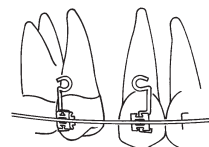
- PLUS SL Brackets
- TPO Ceramic Brackets with vertical slot

Power Hook

- Power hook leg – 0.46 x 0.46mm (.018" x .018").
- Retraction or space closure on cuspids or bicuspid.
- Eliminates the need for special retraction brackets when inserted into the vertical slot.
- Hooks are of proper height to place force at the center of the long axis of the teeth.
- Cuspids and bicuspid can translate with less tendency for tipping.
- Place or remove any time during treatment.
- Place with archwires attached.

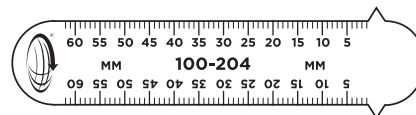


201-131 Long (cuspids)
Oriented: Box of 20



Disposable Flexible Ruler

100-204 Flexible Ruler
Package of 10



Rotating and Uprighting Springs

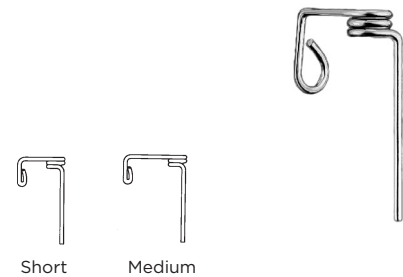
Rotating Spring

- Use with vertically slotted brackets.
- Achieves desired rotation in six weeks.
- Springs with short horizontal arms are recommended for lower anteriors.
- Use springs with medium arms on all other teeth.

Length	Direction*	Oriented
Short	CCW	240-107
	CW	240-108
Medium	CCW	240-111
	CW	240-112

*Indicates desired direction of rotation when observing tooth from occlusal.

Oriented: Box of 20



Standard Uprighting Spring

- Upright individual teeth mesiodistally when used with vertically slotted brackets.
- Springs are made from 0.36mm (.014") wire.
- Clockwise and counterclockwise versions.

For proper spring selection, view tooth from labial to determine whether crown requires clockwise or counterclockwise movement.

Length	Direction*	Non-Oriented
Short	CCW	214-189
	CW	214-190
Long	CCW	214-191
	CW	214-192

*Indicates direction crown needs to upright when observing tooth from labial.

Non-Oriented: Package of 10



Rotating and Uprighting Springs

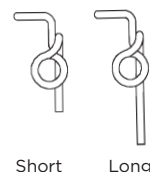
Original Side-Winder Uprighting Spring

- Coil rests on labial surface of single-wing brackets.
- Insert from gingival or incisal, providing a choice for engaging lever arm to avoid interference from adjacent spring.
- Insertion from incisal will prevent coil distortion from occlusal forces.
- Available with long or short vertical legs.
- Long legs may require bending or cutting.

Leg Length	Wire Size	Direction*	Non-Oriented	Oriented
Short	0.36mm (.014")	CCW	214-007	214-005
		CW	214-008	214-006
Long	0.36mm (.014")	CCW	214-003	214-001
		CW	214-004	214-002

*Indicates direction crown needs to upright when observing tooth from labial.

Non-Oriented: Package of 10 • Oriented: Long leg, box of 50 • Short leg: Box of 40



Invisible Side-Winder Uprighting Spring

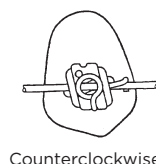
- Straight arm with right-angle hook allows spring to lie nearly parallel.
- Use with Straight-Edge and Tip-Edge brackets.
- Invisible Side-Winder springs are placed first and the elastomeric ties second.
- Elastomeric tie retains both the archwire and the spring.
- Ties replace without removing the springs at future appointments.

FOR SINGLE WING BRACKETS

Direction*	Non-Oriented	Oriented
CCW	214-011	214-009
CW	214-012	214-010

*Indicates direction crown needs to upright when observing tooth from labial.

Non-Oriented: Package of 10 • Oriented: Box of 40



Rotating and Uprighting Springs

Auxiliary Combo Boxes

- Contain an assortment of common auxiliaries.
- Oriented in wax.
- Available in clockwise and counterclockwise series.
- Original or invisible side-winder springs.

240-121 Auxiliary Combo Box
 CCW Original Side-Winder
 2 Power Pins
 2 Crimpable Hooks
 10 Short CCW Original Side-Winder Uprighting Springs
 2 Short CCW Edgewise Rotating Springs
 2 Medium CCW Edgewise Rotating Springs

240-122 Auxiliary Combo Box
 CW Original Side-Winder
 2 Power Pins
 2 Crimpable Hooks
 10 Short CW Original Side-Winder Uprighting Springs
 2 Short CW Edgewise Rotating Springs
 2 Medium CW Edgewise Rotating Springs

240-123 Auxiliary Combo Box
 CCW Invisible Side-Winder
 2 Power Pins
 2 Crimpable Hooks
 10 CCW Invisible Side-Winder Uprighting Springs
 2 Short CCW Edgewise Rotating Springs
 2 Medium CCW Edgewise Rotating Springs

240-124 Auxiliary Combo Box
 CW Invisible Side-Winder
 2 Power Pins
 2 Crimpable Hooks
 10 CW Invisible Side-Winder Uprighting Springs
 2 Short CW Edgewise Rotating Springs
 2 Medium CW Edgewise Rotating Springs



Power Pin



Crimpable
Hook



Rotating
Spring



Original
Side-Winder



Invisible
Side-Winder



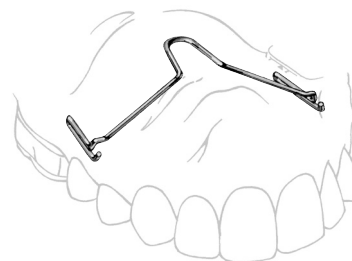
Oriented

Palatal Arch Bars

- Control of upper first molars for stabilization, rotation, torquing or expansion.
- Rotate molars to the buccal by compressing the palatal loop during insertion.
- Molar stability can be maintained by inserting passively.
- Removable bars are designed to fit 0.91mm (.036") lingual sheaths.
- Ligate palatal arch bars to the lingual sheath.

Preformed Palatal Arch Bars

- Unique shape adapts to palate with little or no modification.
- Subtle molar offsets avoid gingival impingement.
- Loop is distally oriented.



Preformed Arch Bar

Reverse Palatal Arch Bars

- Adjustment loop is reversed (mesially oriented) to avoid gag reflex.



Reverse Arch Bar

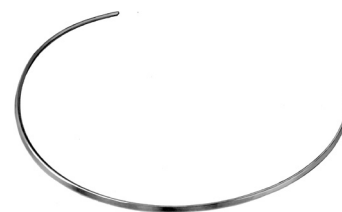
mm	Preformed Arch Bar	Reverse Arch Bar
37	352-237	
43		352-043
46		352-046
49		352-049

Individual Sizes: Package of 5

Torquing Auxiliaries

Torque Bar

- Anterior lingual root torque with maximum aesthetics.
- Nickel titanium.
- Shape memory ensures full activation until incisors have reached desired inclinations.
- Auxiliaries with 20° or 30° torque should be used for active torque delivery.
- 0° torque bars are for braking or stabilizing lower incisors.
- One end of the 20° torque bars are marked blue on the labial surface; 30° are marked red.
- For maxillary lingual root torque, place marking on patient's right.
- For mandibular lingual root torque, marking should be on patient's left.



Gentle enough to use with ceramic edgewise brackets.

Torque	0.46 x 0.46mm (.018" x .018")	0.56 x 0.46mm (.022" x .018")
30°	343-107	343-104

Package of 5

Torquing Auxiliaries

Individual Root Torque

- Use with edgewise brackets with a vertical slot to torque a single tooth.
- Achieve palatal or labial root torque.
- Insert into the bracket's vertical slot from the incisal to achieve palatal root torque.
- Insert from the gingival to create labial root torque.

To prevent over-torquing, place a red dot (enclosed with package) on patient's treatment record the day of insertion as a reminder.

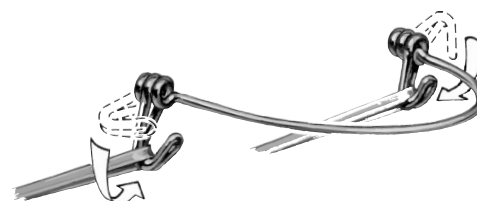
243-216 0.41mm (.016") Individual Root Torque
Package of 10



Outrigger Compliance Appliance

- Easy to use — engages on the main archwire.
- Simple means of ensuring Class I, II or III elastic wearing.
- Reduces adverse vertical forces delivered by Class II elastics.
- Compatible with most treatment mechanics.
- Available in nine sizes.

To determine size, measure from the distal of the right lateral bracket to the distal of the left lateral bracket.

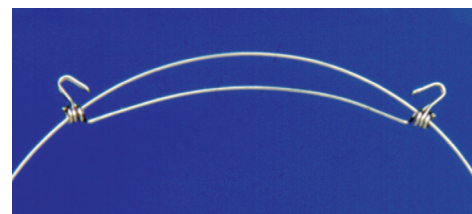


mm	Color	Order No.
28	Pink	226-128
30	Orange	226-130
32	Tooth	226-132
34	Red	226-134
36	Yellow	226-136
38	Blue	226-138
40	Green	226-140
42	Black	226-142
44	Purple	226-144
Standard Kit*		226-200
Trial Kit*		226-190

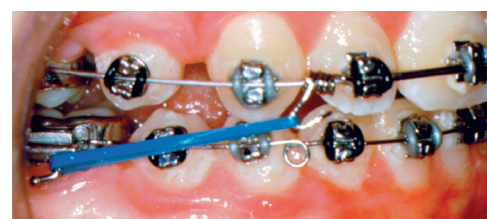
*Standard Kit contains 36 appliances: 6 each of sizes 34, 36 and 38; 3 of all other sizes; plus 3 arch rulers.

*Trial Kit contains 9 appliances

Individual Sizes: Package of 3



Outrigger Appliance



Outrigger in place with elastics engaged

Lip Bumper with Pads

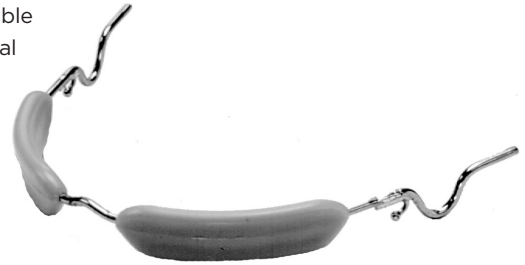
Features anatomically contoured anterior polypropylene pad with gentle radii. Special design reduces tissue irritation and frenum impingement. Pad is slightly flexible to facilitate minor anterior wire adjustments.

Precision formed from 1.14mm (.045") spring-tempered stainless steel. Adjustable U-shaped molar loops serve as stops and simplify transverse, vertical or sagittal adjustments. Ligation hooks facilitate tying to molar tubes.

LIP BUMPER

Size	With Lig. Hook
1	380-461
2	380-462
3	380-463
4	380-464
5	380-465
6	380-466

Package of 3



Sizes 1-6 with Molar Loops



Ligation Hook