

# 10 PRE-FINISHER® APPLIANCE AND BONDABLE LINGUAL RETAINERS



TP Orthodontics, Inc.

[tportho.com](http://tportho.com)

[cosmeticbraces.com](http://cosmeticbraces.com)

# PRE-FINISHER® APPLIANCE AND BONDABLE LINGUAL RETAINERS

## **Pre-Finisher® Appliance**

- Kits
- Individual Appliances
- Disposable Ruler
- Asian

## **Bondable Lingual Retainers**

- Upper Central to Central
- Lower Bicuspid to Bicuspid
- Lower Combination Cuspid-Bicuspid
- Lower Cuspid to Cuspid
- Lower Lateral to Lateral
- Disposable Ruler
- Labial Trauma Splint
- Perio Bond-A-Bar
- Bond-A-Splint®
- Baurmash Arch Bar

### **Did you know?**

Aligner treatment outcomes can be greatly improved by the use of a finishing appliance. The Pre-Finisher Preformed Finishing Appliance is a simple cost-saving solution for refinement and closing of the open posterior bite commonly found with aligner patients. Unlike aligner trays, finishing appliances correct and relate teeth in both arches simultaneously — thereby reducing the need for additional trays.

# Pre-Finisher® Appliance

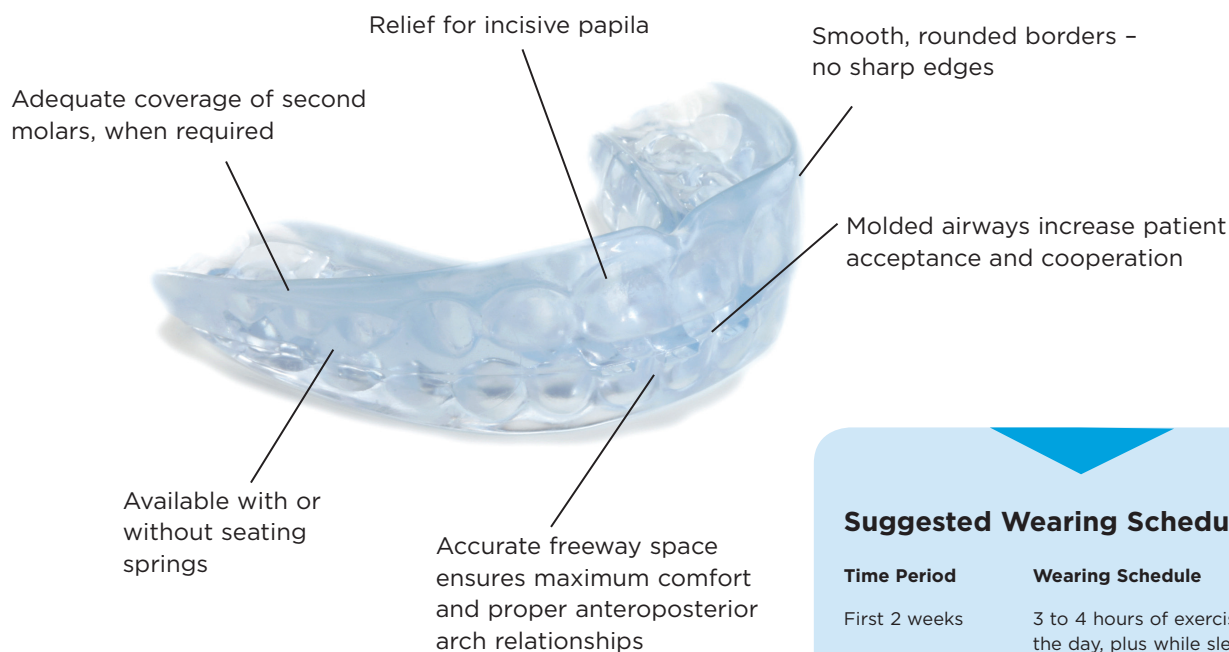
## Clinically Proven for Over 30 Years

Let the Pre-Finisher appliance do the work of detailed finishing. Patients look forward to getting fixed appliances removed earlier, and you'll appreciate the final results without doing the demanding, intricate work.

Near the end of treatment, remove fixed appliances, measure and select a Pre-Finisher appliance from your in-office inventory kit — no impressions required. Enjoy these benefits with less work:

- Immediate delivery to the patient
- Corrects and relates teeth in both arches simultaneously
- Aligns, rotates and closes spaces
- Sized in one-millimeter increments for precise fitting
- Results in 2-3 weeks
- Economical; only one appliance needed

Exclusive features not available in any other pre-formed finishing appliance:



Size, in millimeters (last two digits of part number) molded into each appliance.

### Suggested Wearing Schedule

Time Period	Wearing Schedule
First 2 weeks	3 to 4 hours of exercise during the day, plus while sleeping
Next 4 weeks	2 to 3 hours of exercise during the day, plus while sleeping
Next 6 weeks	2 hours of exercise during the day, plus while sleeping
Next 2 to 3 months	1 hour of exercise during the day, plus while sleeping
After 6 months	Can be worn while sleeping to act as a retainer

# Instructions for Pre-Finisher Size Selection

First, choose the appropriate appliance type from the following series: non-extraction, four-bicuspid extraction, two upper bicuspid extraction or Asian four-bicuspid extraction. Use one of the Pre-Finisher rulers to measure for the correct size. The ruler may be used on the patient's right or left side, according to operator preference.

A reading may be obtained one of two ways:

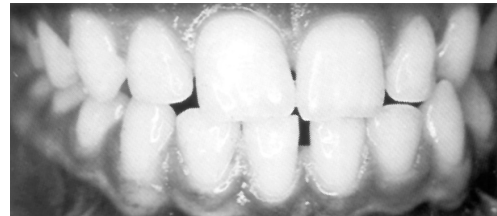
1. For quick, easy measurement in the mouth, use the condensed scale in the center of the ruler. Place the point distal to either the right or left upper cuspid. Curve the ruler along the incisal edges. Reading at midline indicates total mesiodistal width of upper anterior teeth. Note: Each mark on the condensed scale equals two millimeters.
2. For more accurate measurement in the mouth, or when measuring a model, use the full-length scale at the end of the ruler. Place the point distal to the upper right or left cuspid. Bend the ruler along the incisal edges. Take reading distally to the opposite cuspid. Once you have measured, select an appliance with a part number ending in two digits that match the millimeter measurement. If there are band spaces, select a Pre-Finisher one size (1mm) smaller.
3. Fit the Pre-Finisher appliance onto the upper teeth and have the patient close firmly into the appliance. The cuspids should be tightly in contact with the distal surfaces of their respective sockets. You will find a disposable ruler enclosed for every Pre-Finisher appliance in this kit. The millimeter ruler is designed to help you determine proper Pre-Finisher appliance size by measuring either six or three anterior teeth.

## Pre-Finisher® Appliances Kits

An immediate, balanced supply of Pre-Finisher appliances. Kits include a detailed instruction booklet for the orthodontist, special millimeter ruler to facilitate size selection, a supply of patient instruction booklets and a convenient reorder form.

### Convincer Kits

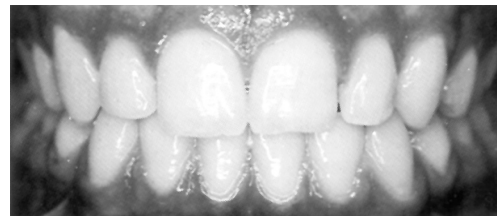
(10 Assorted Sizes)	Plain	With Seating Springs
Non-Extraction	<b>190-010</b>	<b>190-110</b>
Four Bicuspid Extraction	<b>190-410</b>	<b>190-510</b>
Two Upper Bicuspid Extraction	<b>190-210</b>	<b>190-310</b>



Before

### Standard Kits

(15 Assorted Sizes)	Plain	With Seating Springs
Non-Extraction	<b>190-015</b>	<b>190-115</b>
Four Bicuspid Extraction	<b>190-415</b>	<b>190-515</b>
Two Upper Bicuspid Extraction	<b>190-215</b>	<b>190-315</b>



After

### Thrift Kits

(20 Assorted Sizes)	Plain	With Seating Springs
Non-Extraction	<b>190-020</b>	<b>190-120</b>
Four Bicuspid Extraction	<b>190-420</b>	<b>190-520</b>
Two Upper Bicuspid Extraction	<b>190-220</b>	<b>190-320</b>

# Pre-Finisher Appliances

## Individual

Last two digits of order number indicate size of Pre-Finisher in millimeters.

### Non-Extraction Series

Can also be used on first molar extraction cases.

Plain			With Seating Springs		
190-040	190-047	190-054	190-140	190-147	190-154
190-041	190-048	190-055	190-141	190-148	190-155
190-042	190-049	190-056	190-142	190-149	190-156
190-043	190-050	190-057	190-143	190-150	190-157
190-044	190-051	190-058	190-144	190-151	190-158
190-045	190-052		190-145	190-152	
190-046	190-053		190-146	190-153	

Nineteen sizes (40mm to 58mm).

### Four Bicuspid Extraction Series

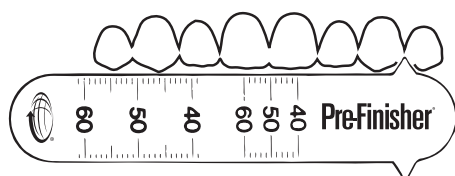
Plain			With Seating Springs		
190-444	190-450	190-456	190-544	190-550	190-556
190-445	190-451	190-457	190-545	190-551	190-557
190-446	190-452	190-458	190-546	190-552	190-558
190-447	190-453	190-459	190-547	190-553	190-559
190-448	190-454	190-460	190-548	190-554	190-560
190-449	190-455		190-549	190-555	

Seventeen sizes (44mm to 60mm).

### Two Upper Bicuspid Extraction Series

Plain			With Seating Springs		
190-244	190-249	190-254	190-344	190-349	190-354
190-245	190-250	190-255	190-345	190-350	190-355
190-246	190-251	190-256	190-346	190-351	190-356
190-247	190-252		190-347	190-352	
190-248	190-253		190-348	190-353	

Thirteen sizes (44mm to 56mm).



## Pre-Finisher Ruler

Single use. Disposable.

**100-102** Pre-Finisher Ruler  
Package of 5

# Pre-Finisher Appliances

## Asian

### Non-Extraction

All Pre-Finishers are made with materials that are phthalate- and BPA-free. The Asian Non-Extraction appliance also has the following enhanced features and benefits.

- Increased Incisal Mamelon Ridge Definition — allows the fit to accommodate pronounced mamelon ridges.
- Decreased Clinical Crown Length — increase patient compliance due to comfort for patients with shorter clinical crown lengths. The gingiva is undisturbed allowing prolonged activation without irritation.
- Increased Airway Flow — redesign of the airway between the incisal edges to increase allowable airflow for patient comfort and extended wear time.

### Asian Non-Extraction Series

Plain	
190-848	190-853
190-849	190-854
190-850	190-855
190-851	
190-852	

Eight sizes (48mm to 55mm).

### Extraction

This series of four bicuspid extraction Pre-Finisher appliances has been designed to accommodate the unique dental characteristics of individuals with Asian dentitions. The sockets for the upper and lower anterior teeth have been broadened labiolingually to accommodate prominent marginal ridges and increased gingival crown thickness.

### Asian Four Bicuspid Extraction Series

Plain		
190-644	190-649	190-654
190-645	190-650	190-655
190-646	190-651	190-656
190-647	190-652	190-657
190-648	190-653	

Fourteen sizes (44mm to 57mm).

# Preformed Bondable Lingual Retainers

Bondable lingual retainers from TP Orthodontics can be fit directly to the teeth or indirectly on a model. Wires are soldered to laminated mesh pads for maximum strength and comfort. Pads are precontoured and shaped to conform to lingual tooth surfaces. All retainer pads are specially coated with PrimeKote® for improved bond strength and easier clean-up. Accu-Fit retainers are specially annealed so they adapt more easily to lingual arch form and are slightly flexible during mastication.

Custom bondable lingual retainers and splints can be found in the [TPO Services Catalog](#).

## Upper Central to Central

- Ideal for holding diastemas closed
- Precision stamped in one piece from 0.43mm (.017") laminated mesh
- Low profile reduces possibility of mandibular incisor interference
- Thin crosspiece is easily adjusted and slightly flexible



**224-200F** Small, 10mm (.394")

**224-210F** Medium, 11.5mm (.453")

**224-220F** Large, 13mm (.512")

Package of 2

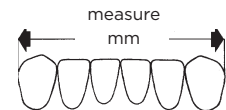
## Lower Bicuspid to Bicuspid Original Medium Temper

Eight sizes graduated in two millimeter increments. Heavy 0.81mm (.032") diameter Dentalloy® wire for increased strength and stability. Laminated mesh bases conform to lingual contours of bicuspid teeth and are graduated in length according to arch size.



Size	Order No.	Size	Order No.
30	<b>224-430</b>	40	<b>224-440</b>
32	<b>224-432</b>	42	<b>224-442</b>
34	<b>224-434</b>	44	<b>224-444</b>
36	<b>224-436</b>		
38	<b>224-438</b>	Kit*	<b>224-460</b>

\*Kit contains twenty retainers; three each of sizes 32, 34, 36 and 38, two of all other sizes, plus a millimeter ruler.  
Individual sizes: Package of 2



Size is determined by millimeter measurement between distal surfaces of canines. Measure along incisolingual edges.

## Lower Combination Cuspid-Bicuspid Original Medium Temper

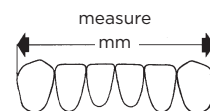
Twisted wires are soldered and welded to cuspid pads and extend into the mesial fossa of bicuspids to hold extraction sites closed, prevent bicuspid rotation and provide additional bonding areas for improved retention. Offsets accommodate mesial marginal ridges of cuspids for proper contact with the lingual surface of lateral incisors.

- Available in ten sizes, graduated in one millimeter increments
- Formed from 0.76mm (.030") diameter Dentalloy® wire

Size	Order No.	Size	Order No.
30	<b>224-330</b>	36	<b>224-336</b>
31	<b>224-331</b>	37	<b>224-337</b>
32	<b>224-332</b>	38	<b>224-338</b>
33	<b>224-333</b>	39	<b>224-339</b>
34	<b>224-334</b>		
35	<b>224-335</b>	Kit*	<b>224-350</b>

\*Kit contains twenty retainers; two of each size, plus a millimeter ruler.

Individual sizes: Package of 2



Size is determined by millimeter measurement between distal surfaces of canines. Measure along incisolingual edges.

## Lower Cuspid to Cuspid

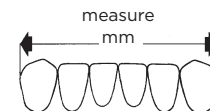
Permits proper contact with lingual surface of lateral incisors. Wire rests just above cingulum of lower incisors to minimize possibility of relapse.

- Ten sizes graduated in one millimeter increments
- Formed from 0.76mm (.030") diameter Dentalloy® wire
- Offsets in wire accommodate mesial marginal ridges of cuspids

Size	Accu-Fit	Original	Size	Accu-Fit	Original
	soft temper	medium temper		soft temper	medium temper
30	<b>224-130</b>	<b>224-030</b>	36	<b>224-136</b>	<b>224-036</b>
31	<b>224-131</b>	<b>224-031</b>	37	<b>224-137</b>	<b>224-037</b>
32	<b>224-132</b>	<b>224-032</b>	38	<b>224-138</b>	<b>224-038</b>
33	<b>224-133</b>	<b>224-033</b>	39	<b>224-139</b>	<b>224-039</b>
34	<b>224-134</b>	<b>224-034</b>			
35	<b>224-135</b>	<b>224-035</b>	Kit*	<b>224-150</b>	<b>224-050</b>

\*Kit contains twenty retainers; two of each size, plus a millimeter ruler.

Individual sizes: Package of 2



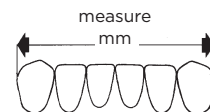
Size is determined by millimeter measurement between distal surfaces of canines. Measure along incisolingual edges.



## Lower Lateral to Lateral

Wire ends are flattened, then welded and soldered to contoured laminated mesh bonding bases for reduced profile and maximum strength.

- Retains lower incisors while allowing cuspids to seek level position
- Offsets in 0.66mm (.026") wire accommodate mesial marginal ridges of laterals
- Six sizes in 1mm increments



Size is determined by millimeter measurement between distal surfaces of canines. Measure along incisolingual edges.

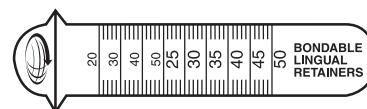
Size	Accu-Fit soft temper	Original medium temper	Size	Accu-Fit soft temper	Original medium temper
18	<b>224-118</b>	<b>224-318</b>	22	<b>224-122</b>	<b>224-322</b>
19	<b>224-119</b>	<b>224-319</b>	23	<b>224-123</b>	<b>224-323</b>
20	<b>224-120</b>	<b>224-320</b>			
21	<b>224-121</b>	<b>224-321</b>	Kit*	<b>224-125</b>	<b>224-300</b>

\*Kit contains fifteen retainers: three each of sizes 20, 21 and 22, two of all other sizes, plus a millimeter ruler.  
Individual sizes: Package of 2

## Disposable Rulers for Bondable Retainers

Used to determine proper appliance size. See individual product pages for measurement guidelines.

- 100-103** Disposable Ruler for Bicuspid-Bicuspid, Combination and Cuspid-Cuspid Bondable Lingual Retainers
- 100-104** Disposable Ruler for Lateral-Lateral Bondable Lingual Retainers  
Package of 20

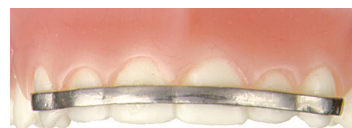


## Labial Trauma Splint

Readily bonded to labial surfaces when incisors have been traumatized due to auto accident or impact. Easily shaped and bonded with minimum instrumentation for effective stabilization.

- Made from flat 0.43mm (.017") stainless steel
- Smooth labial surface
- Laminated mesh bonding surface

**224-225** Trauma Splint, 62mm (2.44")  
Package of 2



## Perio Bond-A-Bar

Stabilizes incisors that show increased mobility due to loss of alveolar bone. Easily cut and shaped to fit irregular teeth or asymmetrical arches.

- Preformed strips of 0.43mm (.017") laminated mesh, stainless steel with smooth lingual surface

**224-226** Lower, 40mm (1.575")  
**224-227** Upper 3-to-3, 52mm (2.047")  
**224-228** Upper 4-to-4, 62mm (2.441")  
 Package of 2



## Lingual Bond-A-Splint® Retainers

"Invisible" splints extend from cuspid to cuspid or can be shortened to retain any combination of adjacent teeth between cuspids.

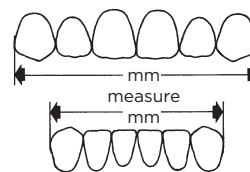
- Precision made from 0.43mm (.017") one-piece stainless steel strips with laminated mesh pads
- Precontoured to simplify direct application on patients' teeth



Lower Size	Order No.	Upper Size	Order No.
29	<b>224-529F</b>	38	<b>224-538F</b>
31	<b>224-531F</b>	40	<b>224-540F</b>
33	<b>224-533F</b>	42	<b>224-542F</b>
35	<b>224-535F</b>	45	<b>224-545F</b>
37	<b>224-537F</b>	47	<b>224-547F</b>

Package of 2

Package of 2



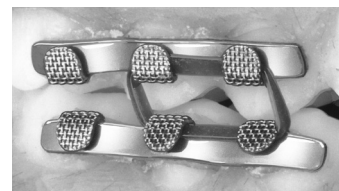
Size selection is determined by millimeter measurement between distal surfaces of cuspids. Measure midway along lingual surface of teeth.

**224-560F** Bond-A-Splint Kit contains 10 splints, one of each size, plus a millimeter ruler in a convenient dispenser

## Baurmash Bondable Arch Bar

- Easily bonded to labial enamel surfaces for management of maxillomandibular injuries or post-orthognathic surgery
- Hooks offer an improved method of ligation, eliminate wire puncture and reduce the risk of infection
- Cut and shaped for sectional placement on four to six teeth to permit accurate contouring and adaptation
- Small hooks allow flexibility of elastic placement
- Formed from .061mm (.024") stainless steel in 14.92cm (5.875") lengths with laminated mesh lingual bonding surfaces

**224-224** Baurmash Bondable Arch Bar  
 Package of 3



Patented



Labial View



Lingual View