

# Nu-Edge<sup>®</sup> SL

Cobalt Chromium Brackets

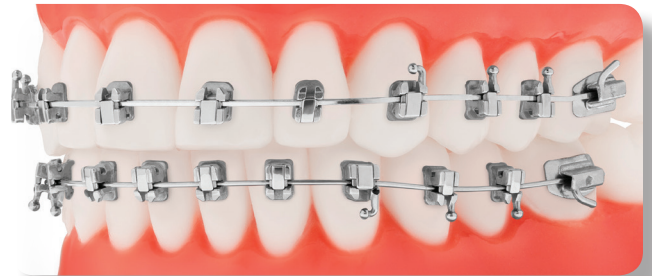
The proven CoCr performance of Nu-Edge brackets now available in a self-ligating design.

## Strength Meets Biocompatibility

Cobalt chromium is biocompatible for nickel sensitive patients and offers superior strength to prevent slot collapse due to occlusal forces.

## Ligation Options

Hidden tie wings allow for traditional elastomeric ligation if needed. Metal ties can also be used due to the strategically placed auxiliary wire slot.

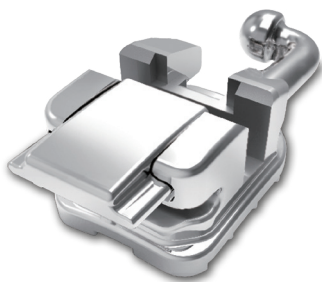
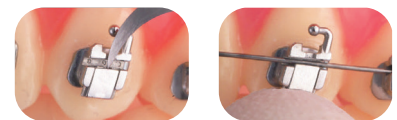


## Robust Locking Mechanism

Once the slide is locked in place the archwire slot becomes a ridged tunnel preventing the bracket from being unseated.

This distinctive dumbbell mechanism provides an audible assurance that the archwire is locked into place. The slide is easily opened using a standard explorer and closed simply by applying finger pressure.

- 1 Opening Brackets**  
To open, insert a standard explorer.
- 2 Locking Brackets**  
To close, apply light gingival pressure.



## Nano Polishing Technology

Helps prevent bacterial adhesion, reduces friction and enhances surface smoothness for patient comfort.

## Maze Base Design

The maze base is designed for optimal bond strength and unmatched adhesive retention during debonding.

Find out more at [tportho.com](http://tportho.com)  
or call **800-348-8856**



# Nu-Edge® Self-Ligating Mini Cobalt Chromium Brackets

## MBT\* McLaughlin, Bennett, Trevisi System

### PATIENT KITS

Slot Size	With Hooks	
0.46mm (.018")	Cuspid/Bicuspid	<b>293-291SL</b>
0.56mm (.022")	Cuspid/Bicuspid	<b>293-294SL</b>

Kits contain 20 brackets.

### MAXILLARY BRACKETS

	Slot Size	Left/ Right	Bondable
Central	0.46mm (.018")	L	<b>293-310SL</b>
		R	<b>293-311SL</b>
Torque +17°			
Angulation + 4°	0.56mm (.022")	L	<b>293-312SL</b>
		R	<b>293-313SL</b>
Lateral	0.46mm (.018")	L	<b>293-314SL</b>
		R	<b>293-315SL</b>
Torque +10°			
Angulation + 8°	0.56mm (.022")	L	<b>293-316SL</b>
		R	<b>293-317SL</b>
Cuspid with Distal Hook	0.46mm (.018")	L	<b>293-322SL</b>
		R	<b>293-323SL</b>
Torque -7°			
Angulation +8°	0.56mm (.022")	L	<b>293-324SL</b>
		R	<b>293-325SL</b>
Bicuspid with Distal Hook	0.46mm (.018")	L	<b>293-330SL</b>
		R	<b>293-331SL</b>
Torque - 7°			
Angulation 0°	0.56mm (.022")	L	<b>293-332SL</b>
		R	<b>293-333SL</b>

Package of 5

### MANDIBULAR BRACKETS

	Slot Size	Left/ Right	Bondable
Anteriors	0.46mm (.018")	L/R	<b>293-354SL</b>
Torque -6°			
Angulation 0°	0.56mm (.022")	L/R	<b>293-355SL</b>
Cuspid with Distal Hook	0.46mm (.018")	L	<b>293-360SL</b>
		R	<b>293-361SL</b>
Torque -6°			
Angulation +3°	0.56mm (.022")	L	<b>293-362SL</b>
		R	<b>293-363SL</b>
1st Bicuspid with Distal Hook	0.46mm (.018")	L	<b>293-268SL</b>
		R	<b>293-269SL</b>
Torque -12°			
Angulation +2°	0.56mm (.022")	L	<b>293-270SL</b>
		R	<b>293-271SL</b>
2nd Bicuspid with Distal Hook	0.46mm (.018")	L	<b>293-276SL</b>
		R	<b>293-277SL</b>
Torque -17°			
Angulation +2°	0.56mm (.022")	L	<b>293-278SL</b>
		R	<b>293-279SL</b>

Package of 5

# Nu-Edge® Self-Ligating Cobalt Chromium Brackets

Compatible with the Roth system: not endorsed by Dr. Roth

### PATIENT KITS

Slot Size	With Hooks	
0.46mm (.018")	Cuspid/Bicuspid	<b>293-106SL</b>
0.56mm (.022")	Cuspid/Bicuspid	<b>293-107SL</b>

Kits contain 20 brackets.

### MAXILLARY BRACKETS

	Slot Size	Left/ Right	Bondable
Central	0.46mm (.018")	L	<b>293-010SL</b>
		R	<b>293-011SL</b>
Torque +17°			
Tip	0.56mm (.022")	L	<b>293-012SL</b>
		R	<b>293-013SL</b>
Lateral	0.46mm (.018")	L	<b>293-014SL</b>
		R	<b>293-015SL</b>
Torque +8°			
Tip	0.56mm (.022")	L	<b>293-016SL</b>
		R	<b>293-017SL</b>
Cuspid with Distal Hook	0.46mm (.018")	L	<b>293-022SL</b>
		R	<b>293-023SL</b>
Torque 0°			
Tip	0.56mm (.022")	L	<b>293-024SL</b>
		R	<b>293-025SL</b>
Bicuspid with Distal Hook	0.46mm (.018")	L	<b>293-098SL</b>
		R	<b>293-099SL</b>
Torque -7°			
Tip	0.56mm (.022")	L	<b>293-100SL</b>
		R	<b>293-101SL</b>

Package of 5

### MANDIBULAR BRACKETS

	Slot Size	Left/ Right	Bondable
Anteriors	0.46mm (.018")	L/R	<b>293-050SL</b>
Torque 0°			
Tip	0.56mm (.022")	L/R	<b>293-052SL</b>
Cuspid with Distal Hook	0.46mm (.018")	L	<b>293-058SL</b>
		R	<b>293-059SL</b>
Torque -11°			
Tip	0.56mm (.022")	L	<b>293-060SL</b>
		R	<b>293-061SL</b>
1st Bicuspid with Distal Hook	0.46mm (.018")	L	<b>293-090SL</b>
		R	<b>293-091SL</b>
Torque -17°			
Tip	0.56mm (.022")	L	<b>293-092SL</b>
		R	<b>293-093SL</b>
2nd Bicuspid with Distal Hook	0.46mm (.018")	L	<b>293-082SL</b>
		R	<b>293-083SL</b>
Torque -22°			
Tip	0.56mm (.022")	L	<b>293-084SL</b>
		R	<b>293-085SL</b>

Package of 5

\*MBT is a registered trademark of 3M Unitek. TP Orthodontics version of the McLaughlin, Bennett and Trevisi prescription is not intended to be a duplication of, nor an endorsement by, these doctors and such endorsement is not implied by the use of this term.